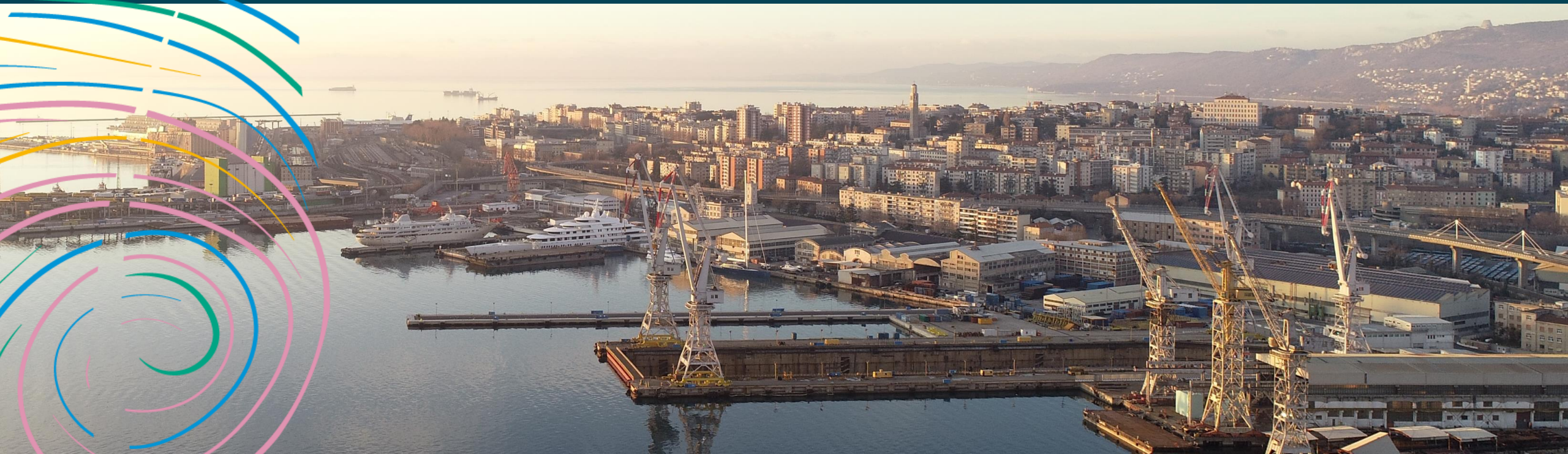


TREASURE

Testing novel environmental
quality measures in and
around Euro-MED ports



3rd WEBINAR, 7 May 2026

“Environmental Impact Assessment: the TREASURE experience”



TREASURE

Interreg
Euro-MED



Co-funded by
the European Union



Human activities are causing **unprecedented environmental changes** in coastal and marine ecosystems.

Port areas become both the final accumulation site for chemicals from anthropic activities and a cause of **pollution that is difficult to contain**.

This represents a significant **environmental risk for marine biodiversity** and surrounding areas that TREASURE aims to mitigate.



TREASURE aims to improve environmental quality in and around Mediterranean ports by reducing sediment and water pollution.

To this end, project partners created an **innovative transnational approach** to testing and experiment **new techniques for the remediation** of degraded and polluted port areas.

TREASURE in numbers



TOTAL
BUDGET

€ 2.501.521,50



PROJECT
DURATION

36 months
Until
December
2026



MED PORT AREAS
INVOLVED

7



Our area of interest

TREASURE operates in several ports, specifically **Port of Valencia** (Spain), **Port of Toulon** (France), **Port of Livorno** (Italy), **Port of La Valletta** (Malta), **Port of Piraeus** (Greece), **Port of Durres** (Albania) and **Port of Bar** (Montenegro) but aims at transferring its results to the overall Mediterranean area.





LEAD PARTNER
Agency for the Development
of the Empolese-Valdelsa



Italian Institute for Environmental
Protection and Research



Port of Bar



Valenciaport Foundation for research,
promotion and commercial studies
of the Valencian Region



Durres Port Authority



Pôle Mer Méditerranée –
Toulon Var Technologies



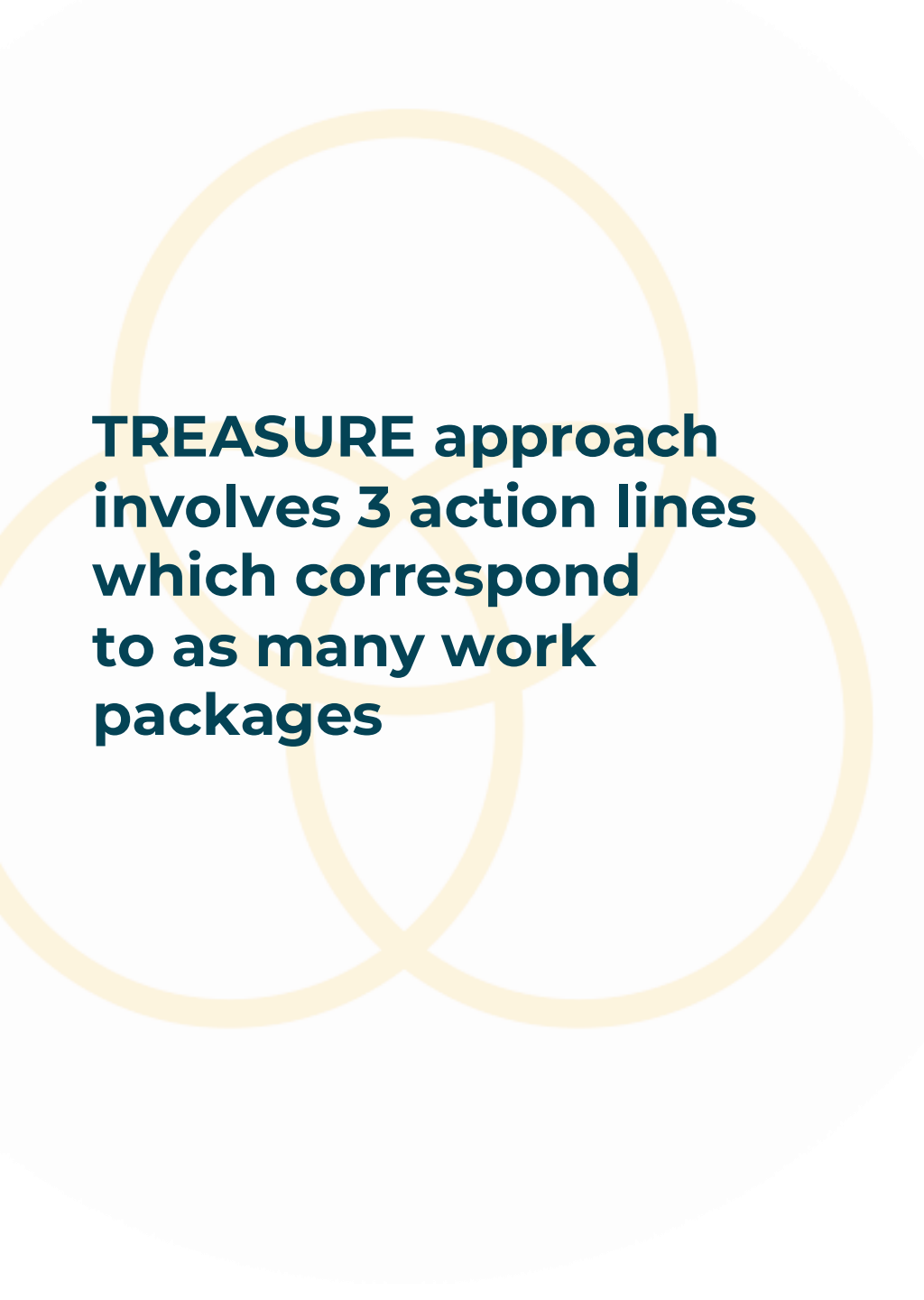
Transport Malta



Piraeus Port Authority



Central European Initiative -
Executive Secretariat



**TREASURE approach
involves 3 action lines
which correspond
to as many work
packages**

1. **WP1** — Multi-stakeholder, cross-sector **governance solutions**, designed for the creation and management of territorial labs (mini-labs: capitalization tool), as well as to introduce improvements to policies and regulations
2. **WP2** — **New approaches to environmental assessment, through the “Lines of Evidence”, for a qualitative evaluation of different compartments (sediments / water / biota) of the port environment**
3. **WP3** — Identification and Testing of **novel techniques** for environmental remediation in sediments and water, in and around port areas.

PROGRAMME

Time	Session	Speaker
10:00 – 10:15	Welcome and Introduction to the TREASURE Project	<i>Anna Marconato - CEI-ES</i>
10:15 – 10:45	Introduction to the TREASURE approach to monitoring environmental quality through Lines of Evidence – the Environmental quality assessment matrix	<i>Cristian Mugnai - Italian Institute for Environmental Protection and Research, ISPRA</i>
10:45 – 11:00	Application of the Environmental Assessment Matrix in Port Contexts: Practical Experiences, Sampling Activities, Key Takeaways and Critical Challenges – the port of Piraeus case	<i>Pavlos Filippidis - Piraeus Port Authority</i>
11:00– 11:15	Application of the Environmental Assessment Matrix in Port Contexts: Practical Experiences, Sampling Activities, Key Takeaways and Critical Challenges – the port of Livorno case	<i>Lorenzo Morroni - Italian Institute for Environmental Protection and Research, ISPRA</i>
11.15 – 11.30	Q&A	

THANK YOU!

Don't miss the Final Conference in Toulon (in September,
date to be announced soon)



TREASURE

Interreg
Euro-MED



Co-funded by
the European Union